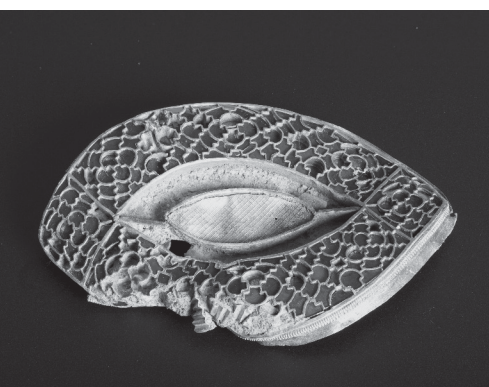




# STOKE-ON-TRENT

FAMILY FUN | HISTORY AND HERITAGE | SHOPPING DAYS | GARDENS AND HOUSES | GREAT EVENTS...



# There's always something going on here



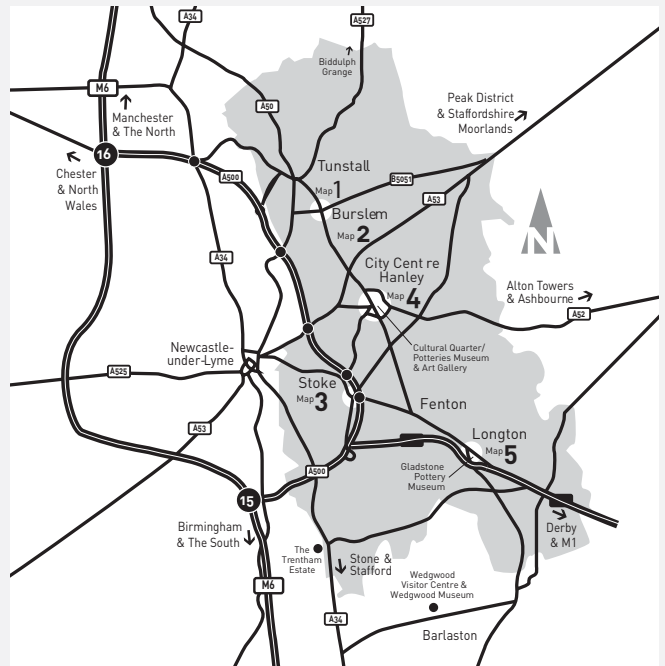
## Welcome

Stoke-on-Trent is a unique city comprising six separate towns, known affectionately the world over as THE POTTERIES. From north to south these are TUNSTALL, BURSLEM, HANLEY (CITY CENTRE), STOKE, FENTON and LONGTON. Factory shops, pottery factories and attractions are spread throughout the city.

These maps are designed to help you with route planning and to locate the factory shops, and attractions in the six towns. Please use these maps in conjunction with the 'Stoke-on-Trent Group Travel Guide 2018/19'. If you do not have a copy, please contact us at the address below.

Only main/relevant routes and road numbers have been indicated. The maps are not to scale.

Most of the city's attractions and factory shops have coach parking facilities as indicated. These maps also detail set down and pick up points and show the additional coach parking available in the City Centre. Many of the attractions are brown and white signed from major roads.



## Meal Stops

The following attractions and venues featured in this booklet offer a wide range of refreshment facilities:

### Map 1 The North of the City

- Biddulph Grange Garden (tea room)
- Rode Hall (light refreshments)

### Map 2 North of the City – Burslem

- Dimensions Leisure Centre
- Ford Green Hall (for smaller groups only)
- Middleport Pottery
- Moorcroft Heritage Visitor Centre (vending machine)
- Royal Stafford (light refreshments)

### Map 3 Stoke

- Dorothy Clive Garden
- Fenton Manor Sports Complex

### Map 4 – 4a City Centre

- Emma Bridgewater Pottery Cafe
- Festival Park (various fast food outlets)
- intu Potteries
- Mitchell Arts Centre
- New Vic Theatre
- Potteries Museum and Art Gallery
- Regent Theatre
- The Dudson Museum
- Victoria Hall

### Map 5 Longton and South of the City

- Gladstone Pottery Museum
- The Trentham Estate
- Trentham Monkey Forest
- World of Wedgwood (Barlaston)

## Factory Holidays

Factory Tours are not available during factory holidays. The dates here are inclusive and show factory holidays for 2018. Most factory shops remain open but we advise you to check before you travel. The Visitor Centres are open throughout the year except Christmas week and New Year's Day.

**Late Summer**  
Thursday 23 August, Friday 24 August and working week of 27 August.

**Christmas 2017**  
From Saturday 22 December 2018 until Wednesday 2 January 2019

**Easter 2018**  
Friday 30 March 2018  
Working week of 2 April 2018

For further information please contact:  
Stoke-on-Trent Tourism,  
Hanley Town Hall, Albion Street, Stoke-on-Trent City Centre, ST1 1XP  
T: 01782 232817/236084  
E: [tourism@stoke.gov.uk](mailto:tourism@stoke.gov.uk)  
[visitstoke.co.uk/groups](http://visitstoke.co.uk/groups)

**May Day**  
Monday 7 May 2018

**Spring bank holiday**  
Monday 28 May 2018

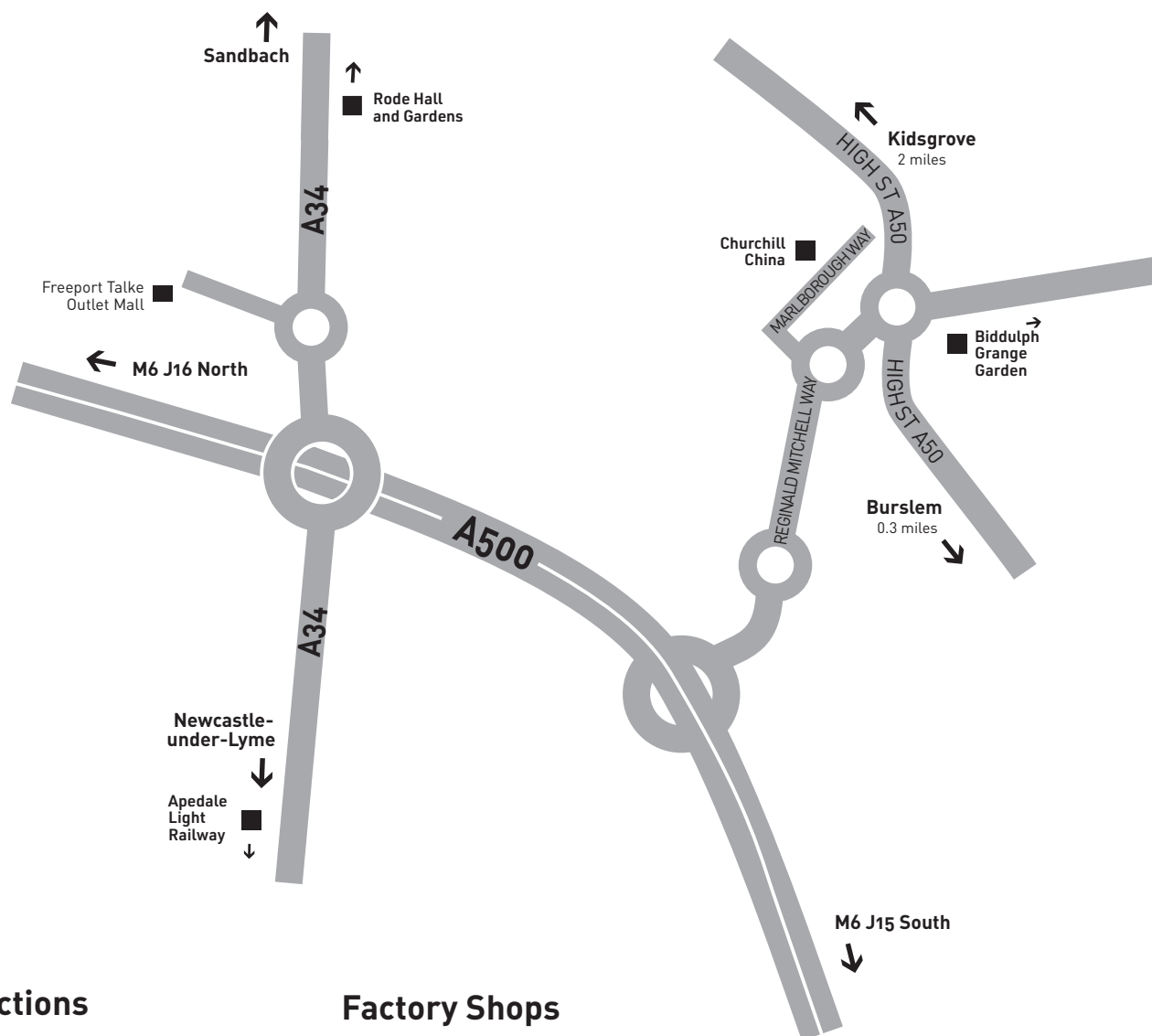
**Annual**  
Thursday 21 June, Friday 22 June. Working weeks of 25 June and 2 July



City of  
**Stoke-on-Trent**

# Map 1

## The North of the City



### Attractions

#### **Biddulph Grange Garden**

Grange Road, Biddulph,  
Stoke-on-Trent, ST8 7SD

T: 01782 517999

Coach parking: On site.

#### **Freeport Talke**

Pitt Lane, Stoke-on-Trent, ST7 1XD

T: 01782 774113

Coach parking: On site.

#### **Rode Hall & Gardens**

Rode Hall, Scholar Green,  
Cheshire, ST7 3QP

T: 01270 873237

Coach parking: On site.

#### **Apedale Valley Light Railway**

Loomer Road, Chesterton,  
Newcastle-under-Lyme,

Staffordshire, ST5 7LB

T: 0845 094 1953

Coach parking: On site.

### Factory Shops

#### **Churchill**

No.1 Marlborough Way,  
Off Reginald Mitchell Way,  
Tunstall, Stoke-on-Trent, ST6 5NZ

T: 01782 525203

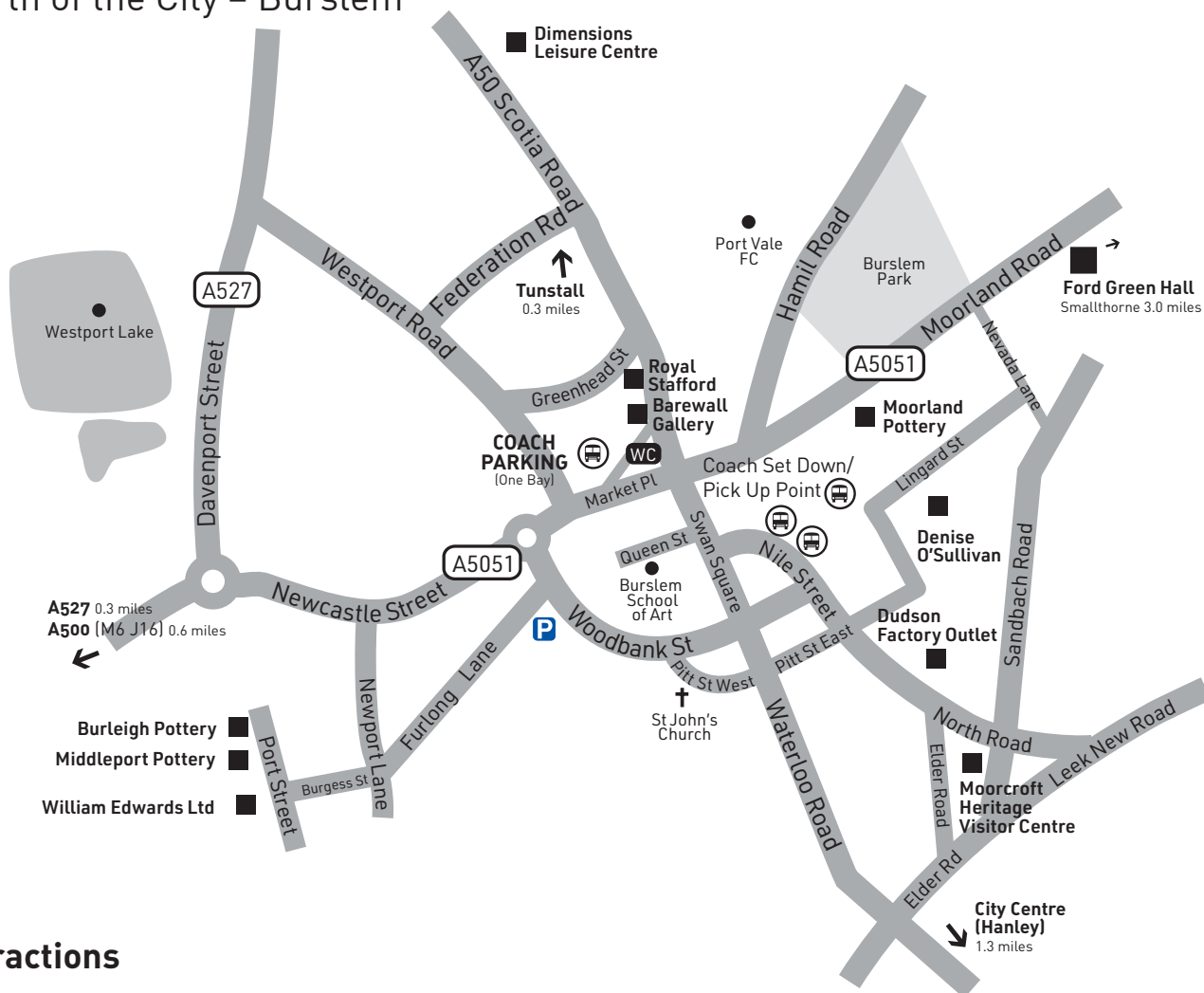
Coach parking: On site.

For further information about the attractions and factory shops, including opening times, please refer to the Stoke-on-Trent Group Guide, or visit

[visitstoke.co.uk/groups](http://visitstoke.co.uk/groups)

# Map 2

## North of the City – Burslem



## Attractions

**Dimensions Leisure Centre**  
Scotia Road, Stoke-on-Trent,  
Stoke-on-Trent ST6 4ET  
T: 01782 233500  
Coach parking: On site.

**Ford Green Hall**  
Ford Green Road, Smallthorne,  
Stoke-on-Trent, ST6 1NG  
T: 01782 537696  
Coach parking: Adjacent.

**Middleport Pottery**  
Port Street, Burslem,  
Stoke-on-Trent, ST6 3PE  
T: 01782 499766  
Coach parking: On street.

**Moorcroft Heritage Visitor Centre**  
Sandbach Road, Burslem,  
Stoke-on-Trent, ST6 2DQ  
T: 01782 820515  
Coach parking: Adjacent.

**Port Vale Football Club**  
Vale Park, Hamil Road, Burslem,  
Stoke on Trent, ST6 1AW  
T: 01782 655809

## Factory Shops

**Barewall Gallery**  
2 – 4 Market Place, Burslem,  
Stoke-on-Trent, ST6 4AT  
T: 01782 258843  
Coach parking: On Nile Street  
nearby.

**Burleigh Pottery**  
Middleport Pottery, Port Street,  
Burslem, Stoke-on-Trent, ST6 3PE  
T: 01782 525510  
Coach parking: On street.

**Dudson Factory Outlet**  
Nile Street, Burslem,  
Stoke-on-Trent, ST6 2BA  
T: 01782 821075  
Coach parking: On site.

**Royal Stafford**  
Wedwood Place, Burslem,  
Stoke-on-Trent, ST6 4EE  
T: 01782 525419  
Coach parking: On Nile Street  
nearby.

**Denise O'Sullivan Ceramics**  
Albany Works, Lingard Street,  
Burslem, Stoke-on-Trent, ST6 1ED  
T: 078349 23270  
Coach parking: On street

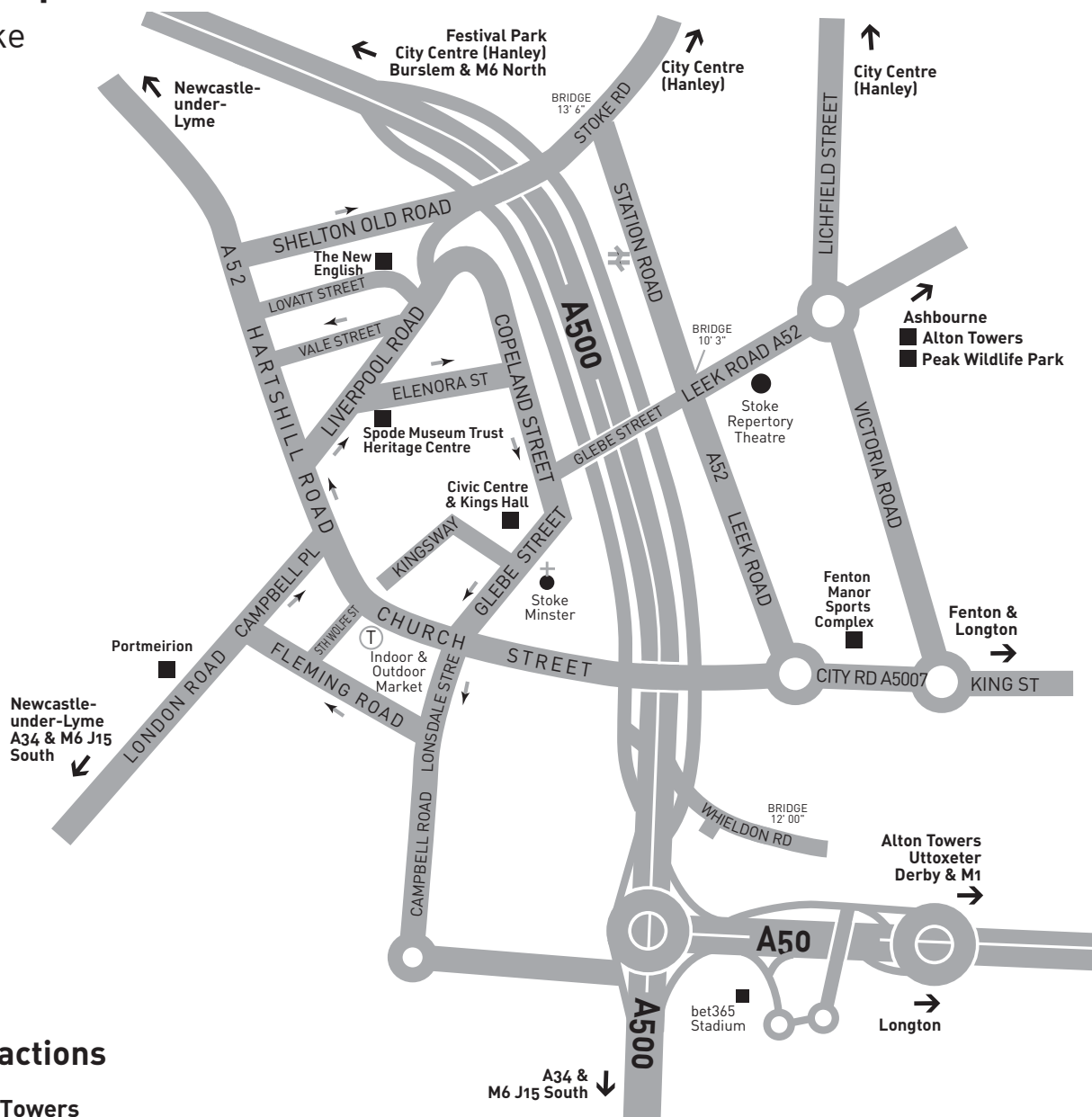
**Moorland Pottery**  
2A, Moorland Rd, Burslem,  
Stoke-on-Trent, ST6 1DY  
T: 01782 834631  
Coach parking: On street.

**William Edwards Ltd**  
Port Street, Middleport, Stoke-on-  
Trent, ST6 3PF  
T: 01782 838000  
Coach parking: On site.

For further information about the attractions and factory shops, including opening times, please refer to the Stoke-on-Trent Group Guide, or visit [visitstoke.co.uk/groups](http://visitstoke.co.uk/groups)

# Map 3

Stoke



## Attractions

### Alton Towers

Alton, Staffordshire, ST10 4DB  
T: 0871 222 3330  
Coach parking: On site.

### bet365 Stadium

Stanley Matthews Way,  
Stoke-on-Trent, ST4 4EG  
T: 01782 592233  
Coach parking: On site.

### Dorothy Clive Garden

Willoughbridge, Market Drayton,  
Shropshire, TF9 4EU  
T: 01630 647237  
E: info@dorothyclivegarden.co.uk  
Coach parking: On site.

### Fenton Manor Sports Complex

City Road, Fenton, Stoke-on-Trent  
ST4 2RR  
T: 01782 233222  
Coach parking: On site.

### Peak Wildlife Park

Winkhill, Leek,  
Staffordshire, ST13 7QR  
T: 01538 308880  
Coach parking: on site

### Spode Museum Trust Heritage Centre

Elenora Street, Stoke,  
Stoke-on-Trent, ST4 1QQ  
T: 01782 411421  
Coach parking: On site.

### The New English

9-11 Lovatt Street, Stoke,  
Stoke-on-Trent, ST4 7RW  
T: 01782 698520  
Coach Parking: Nearby on street

## Factory Shops

### Portmeirion, Stoke

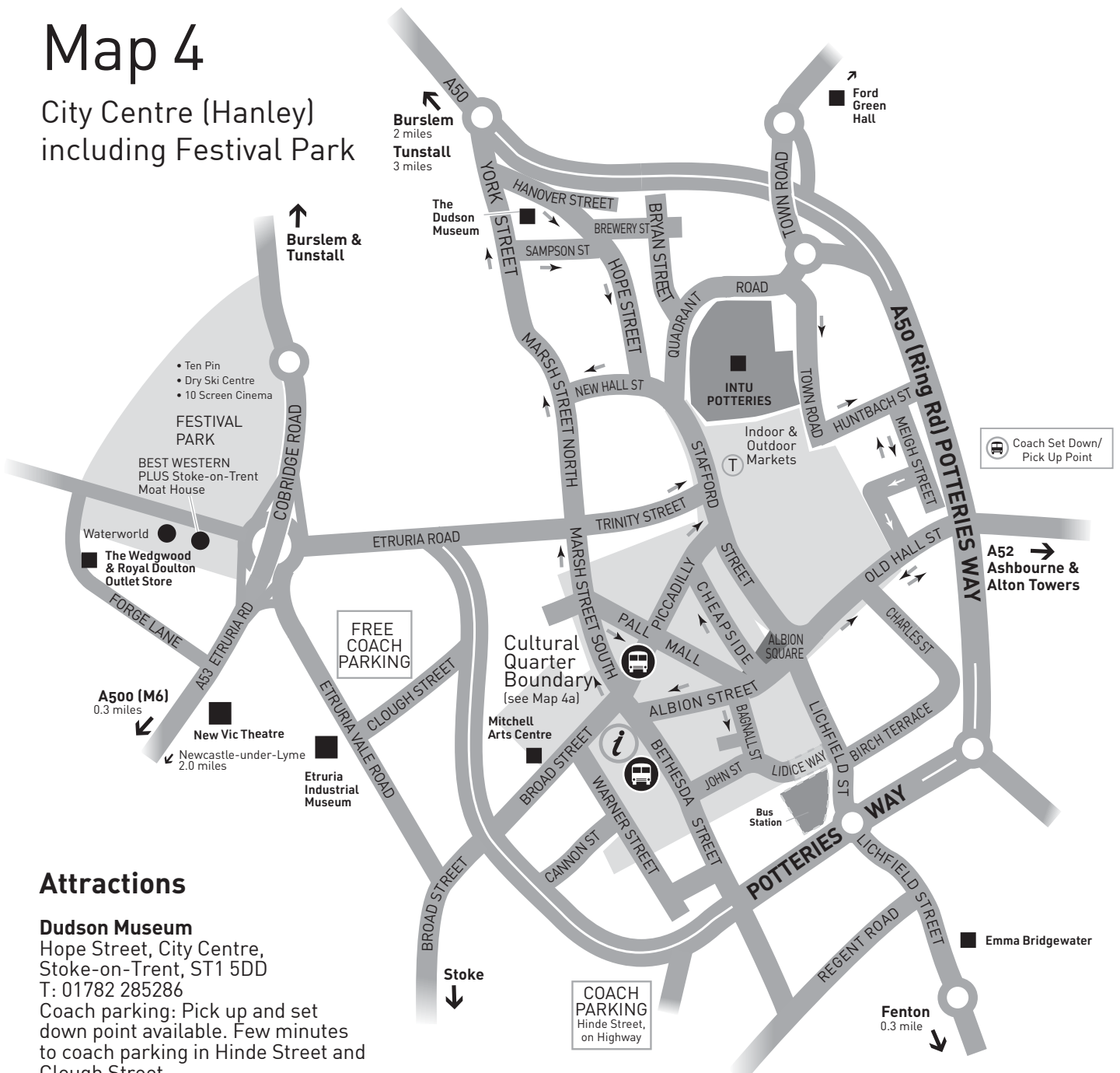
London Road, Stoke,  
Stoke-on-Trent, ST4 7QQ  
T: 01782 743649/411756  
Coach parking: On site.

For further information about the attractions and factory shops, including opening times, please refer to the Stoke-on-Trent Group Guide, or visit

[visitstoke.co.uk/groups](http://visitstoke.co.uk/groups)

# Map 4

City Centre (Hanley)  
including Festival Park



## Attractions

### Dudson Museum

Hope Street, City Centre,  
Stoke-on-Trent, ST1 5DD  
T: 01782 285286

Coach parking: Pick up and set down point available. Few minutes to coach parking in Hinde Street and Clough Street.

### intu Potteries

City Centre, Stoke-on-Trent,  
ST1 1PS  
T: 01782 289822

Coach parking: Coach parking on Hinde Street and Clough Street.

### Etruria Industrial Museum

Etruria Vale Road, Etruria,  
Stoke-on-Trent, ST1 4RB  
T: 07900 267711

Coach parking: On site.

## Factory Shops

### Emma Bridgewater

Eastwood Works, Lichfield Street,  
City Centre, Stoke-on-Trent,  
ST1 3EJ

T: 01782 201328

Coach parking: On site.

### The Wedgwood and Royal Doulton Outlet Store

Forge Lane, Etruria,  
Stoke-on-Trent, ST1 5NP  
T: 01782 284056

Coach parking: On site.

## Accommodation and Meal Stops

### Best Western Plus Stoke-on-Trent Moat House

Etruria Hall, Festival Way, Etruria,  
Stoke-on-Trent, ST1 5BQ  
T: 01782 609988

### Festival Park

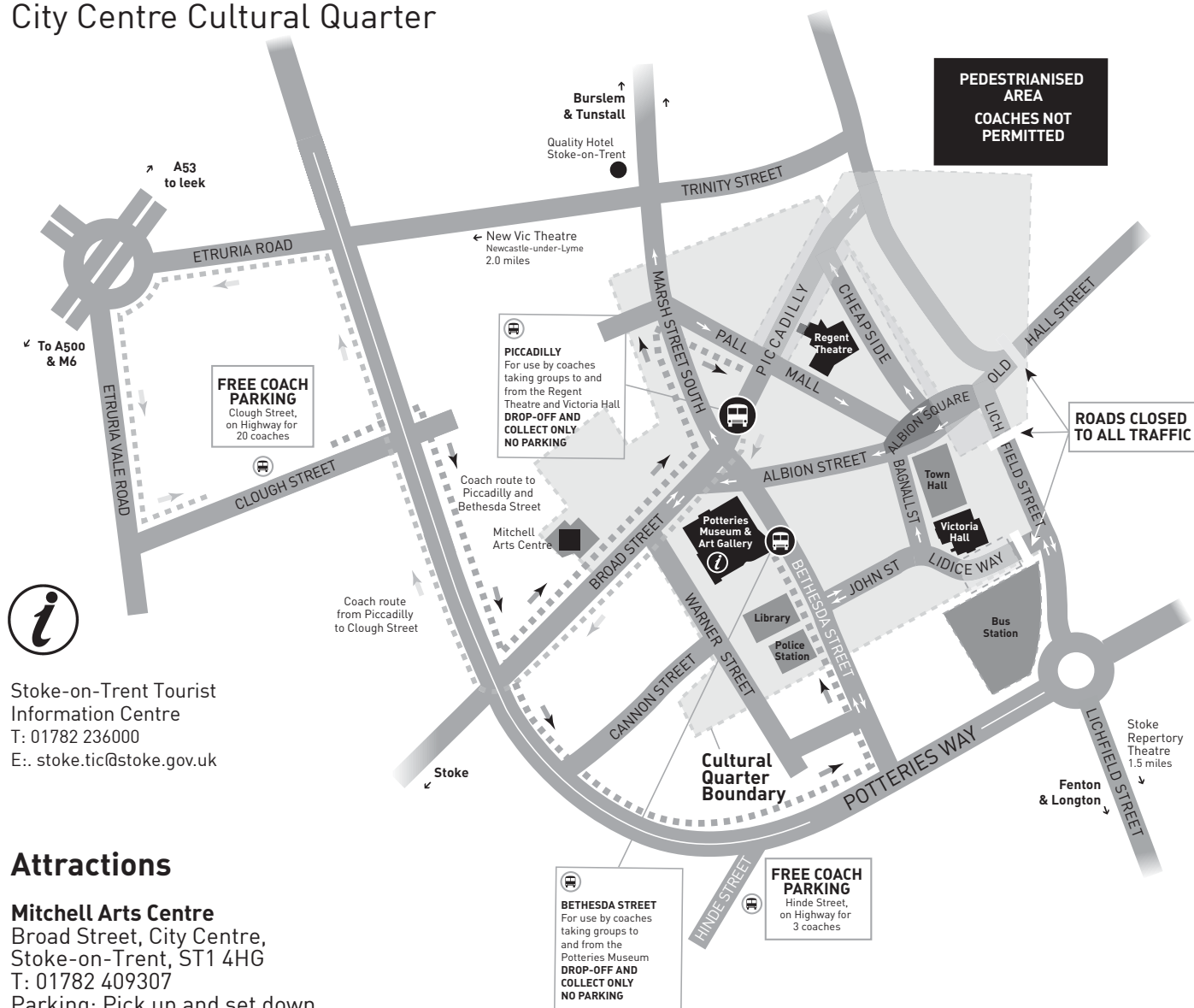
Etruria, City Centre,  
Stoke-on-Trent, ST1 5PU

For further information about the attractions and factory shops, including opening times, please refer to the Stoke-on-Trent Group Guide, or visit

[visitstoke.co.uk/groups](http://visitstoke.co.uk/groups)

# Map 4a

## City Centre Cultural Quarter



Stoke-on-Trent Tourist Information Centre  
 T: 01782 236000  
 E: [stoke.tic@stoke.gov.uk](mailto:stoke.tic@stoke.gov.uk)

## Attractions

### Mitchell Arts Centre

Broad Street, City Centre, Stoke-on-Trent, ST1 4HG  
 T: 01782 409307  
 Parking: Pick up and set down points on Piccadilly. Coach parking on Hinde Street and Clough Street.

### New Vic Theatre

Newcastle-under-Lyme, Staffordshire, ST5 0JG  
 A few minutes drive from the City Centre's Cultural Quarter.  
 T: 01782 717962

### Regent Theatre

Piccadilly, Cultural Quarter, Stoke-on-Trent City Centre, ST1 1AP  
 T: 0333 0095 383  
 Coach parking: Pick up and set down points on Piccadilly. Coach parking on Hinde Street and Clough Street.

### Stoke Repertory Theatre

Leek Road, Stoke, ST4 2TR  
 A few minutes drive from the City Centre's Cultural Quarter.  
 T: 01782 209784

### The Potteries Museum & Art Gallery

Bethesda Street, City Centre, Stoke-on-Trent, ST1 3DW  
 T: 01782 232323  
 Coach parking: Pick up and set down point outside on Bethesda Street. Coach parking on Hinde Street and Clough Street.

### Victoria Hall

Bagnall Street, Cultural Quarter, Stoke-on-Trent City Centre, ST1 3AD  
 T: 0333 0095 383  
 Coach parking: Pick up and set down points on Piccadilly. Coach parking on Hinde Street and Clough Street.

## City Centre Coach Parking

Coaches are now only allowed to drop off and pick up passengers in the lower part of Piccadilly. Coaches are not permitted to drop off or pick up anywhere else in the City Centre.

Free coach parking is available for 3 vehicles in Hinde Street and there are now also 20 coach parking bays available in Clough Street.

The map above shows how to get to and from Piccadilly and the coach parking in Clough Street.

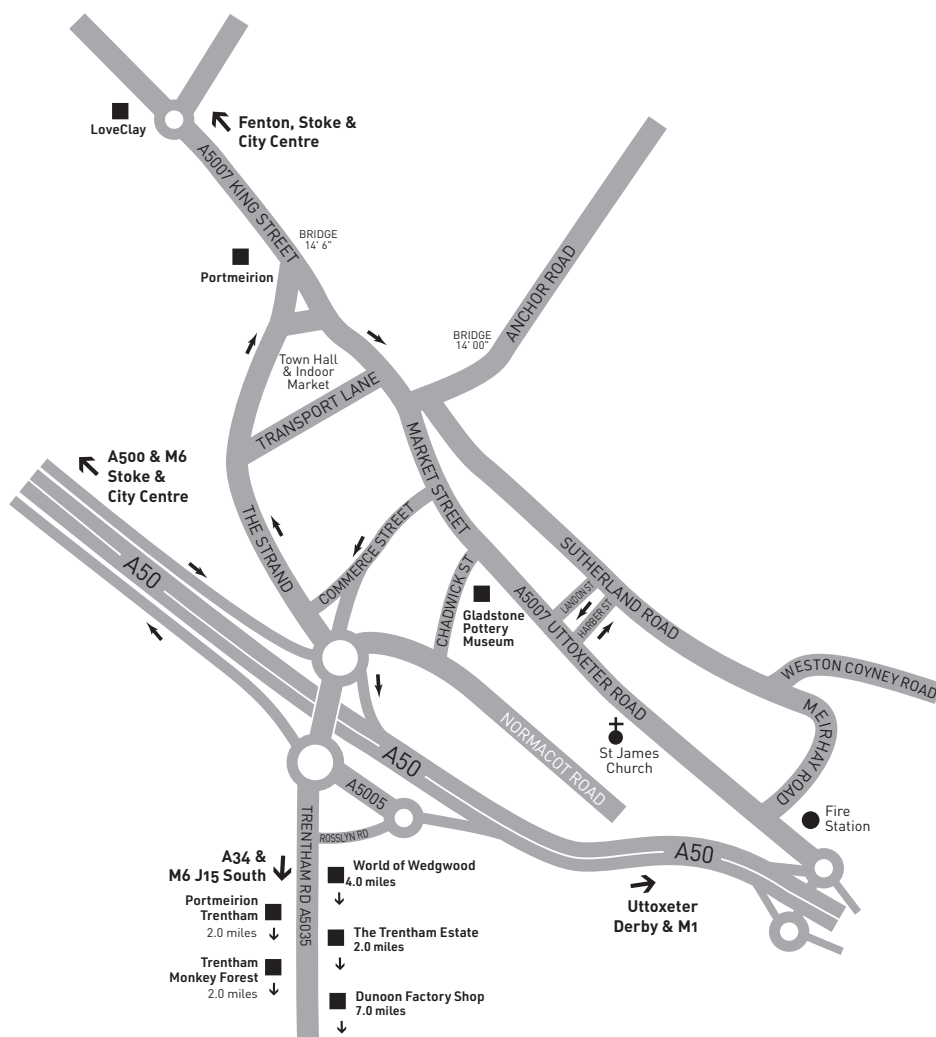
The new drop-off/pick-up area is within the City Centre pedestrian zone and should not be abused by waiting for any longer than is absolutely necessary to drop off or collect passengers.

For further information about the attractions and factory shops, including opening times, please refer to the Stoke-on-Trent Group Guide, or visit

[visitstoke.co.uk/groups](http://visitstoke.co.uk/groups)

# Map 5

## Longton and South of the City



### Attractions

#### Gladstone Pottery Museum

Uttoxeter Road, Longton,  
Stoke-on-Trent, ST3 1PQ  
T: 01782 237777

Coach parking: On site, Chadwick Street.

#### LoveClay

Valentine Clays, Valentine Way,  
Stoke-on-Trent, ST4 2FJ  
T: 01782 271200

Coach parking: Free on site but please contact in advance.

#### The Trentham Estate

Stone Road, Trentham,  
Stoke-on-Trent, ST4 8JG  
T: 01782 646646

Coach parking: On site.

#### Trentham Monkey Forest

Trentham Estate, Stone Road,  
Trentham, Stoke-on-Trent, ST4 8AY  
T: 01782 659845

Coach parking: On site.

#### World of Wedgwood

Barlaston, Stoke-on-Trent,  
ST12 9ER  
T: 01782 282986

Coach parking: On site.

### Factory Shops

#### Portmeirion, Longton

500 King Street, Longton,  
Stoke-on-Trent, ST3 1EZ  
T: 01782 326661

Coach parking: On site.

#### Portmeirion, Trentham

Unit 230, Trentham Shopping  
Village, Trentham Estate,  
Stoke-on-Trent, ST4 8AX  
T: 01782 657828/743418

Coach parking: On site.

#### Dunoon Factory Shop

50 High Street, Stone,  
Staffordshire, ST15 8AU  
T: 01785 818300

Coach parking: On site.

### Accommodation and Meal Stops

#### The Trentham Estate

Stone Road, Trentham,  
Stoke-on-Trent, ST4 8JG  
T: 01782 646646

Coach parking: On site.

For further information about the attractions and factory shops, including opening times, please refer to the Stoke-on-Trent Group Guide, or visit

[visitstoke.co.uk/groups](http://visitstoke.co.uk/groups)